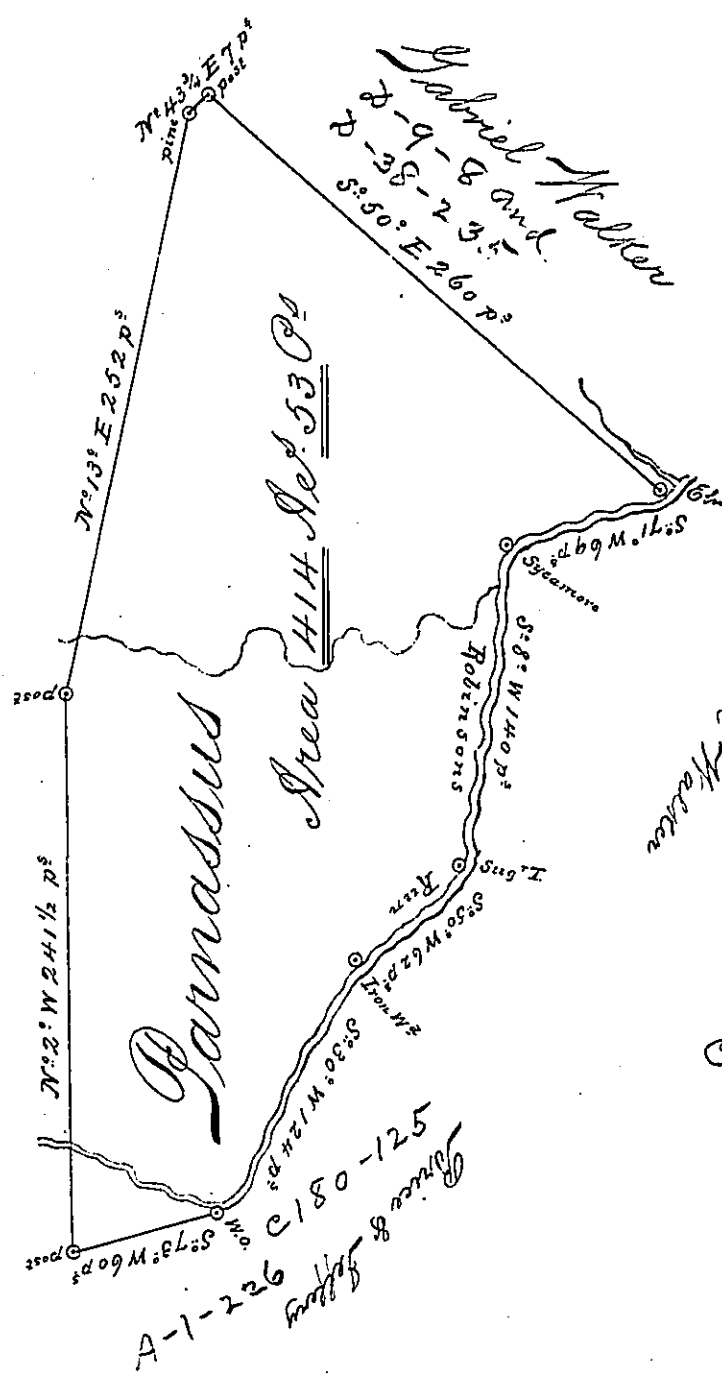


P-13-329  
S.W. 1008  
A-79-74X  
P-43-563

B-1-154  
Nugh W Brackenridge



Gabriel Malten  
C-230-191

C-142-127

A Draught of a Survey called "Parnassus" situate on Robinsons Run Washington County. containg 414 Ac 53 P<sup>s</sup> strict Measure executed by 8<sup>th</sup> of July 1785 for Nugh W. Brackenridge App<sup>ee</sup> of Ju<sup>o</sup> Remroe in Consequence of a Certif<sup>ic</sup> for 400 Ac<sup>s</sup> granted to s<sup>d</sup> Remroe by the Commis<sup>rs</sup> appointed by Virg<sup>a</sup> to adjust the claims to unpatented lands in the Counties Monong<sup>a</sup> Gohg<sup>a</sup> & Ohio and duly entered with the County Suror<sup>o</sup> & c<sup>t</sup> ret<sup>d</sup> 15 May 87 Entry to Ju<sup>o</sup> Remro 21<sup>st</sup> Apl & c<sup>t</sup>

Matt<sup>w</sup> Ritchie } D.S.  
Presley Nevill }

Ju<sup>o</sup> Lukens Esq<sup>r</sup> S. Gen<sup>l</sup>

IN TESTIMONY that the above is a copy of the original remaining on file in the Department of Internal Affairs of Pennsylvania, made conformably to an Act of Assembly approved the 16th day of February, 1833, I have hereunto set my Hand and caused the Seal of said Department to be affixed at Harrisburg, this

seventh day of January 1896

James W. Latta  
Secretary of Internal Affairs